



Energy Division

HV torque controlled lugs and  
connectors for terminations  
and joints up to 72 kV

# HV torque controlled lugs and connectors for terminations and joints up to 72 kV

## Features - Benefits



## Torque controlled shear off bolts

- fast and safe installation
- excellent electrical performance
- excellent mechanical performance
- easy installation with socket wrench

## Application range

- pre-engineered design for perfect fit
- Cu and Al conductors
- suitable for up to 1600 mm<sup>2</sup>

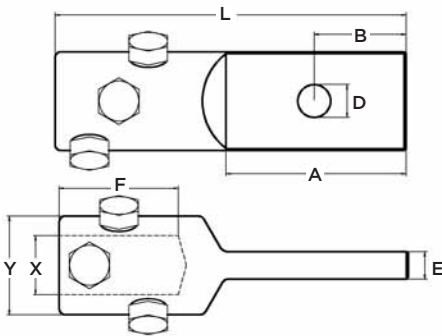
## Connectors

- straight and size transition type
- body made of aluminum alloy

## Lugs

- variety of different palms available
- body made of tinned aluminum alloy

## Cable lug with 1-hole palm (EPPA-052-X/Y)

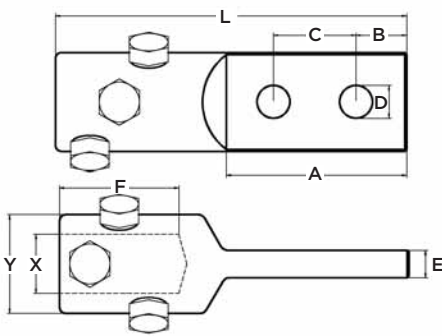


### Dimension:

- |            |           |
|------------|-----------|
| L = 190 mm | D = 18 mm |
| A = 100 mm | E = 25 mm |
| B = 50 mm  | F = 64 mm |

X, Y according to the cable dimensions

## Cable lug with 2-hole palm (EPPA-051-X/Y)

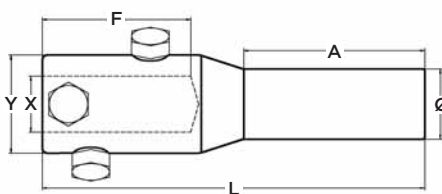


### Dimension:

- |             |           |
|-------------|-----------|
| L = 190 mm  | D = 18 mm |
| A = 100 mm  | E = 25 mm |
| B = 27.5 mm | F = 64 mm |
| C = 45 mm   |           |

X, Y according to the cable dimensions

## Cable lug with rod



### Dimension:

#### ROD Ø 30 mm (EPPA-050-X/Y)

- |            |           |
|------------|-----------|
| L = 190 mm | F = 64 mm |
| A = 100 mm | Ø = 30 mm |

#### ROD Ø 40 mm (EPPA-053-X/Y)

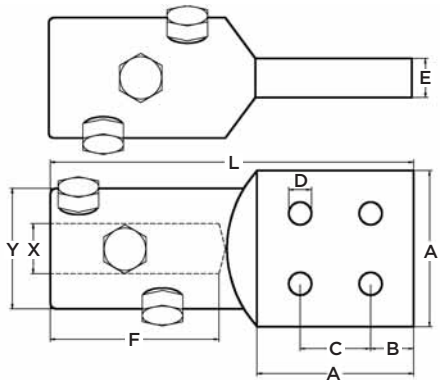
- |            |            |
|------------|------------|
| L = 264 mm | F = 106 mm |
| A = 125 mm | Ø = 40 mm  |

#### ROD Ø 50 mm (EPPA-061-X/Y)

- |            |            |
|------------|------------|
| L = 264 mm | F = 106 mm |
| A = 125 mm | Ø = 50 mm  |

X, Y according to the cable dimensions

**Cable lug with 4-hole palm NEMA pad (EPPA-054-X/Y)**



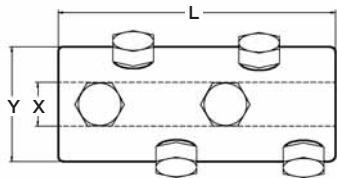
**Dimension:**

Contact plate 100 mm x 100 mm  
 L = 232 mm    C = 45 mm  
 A = 100 mm    D = 14.5 mm  
 B = 27.5 mm    F = 112 mm  
 E = 25 mm

Contact plate 80 mm x 80 mm  
 L = 212 mm    C = 45 mm  
 A = 80 mm    D = 14.5 mm  
 B = 17.5 mm    F = 112 mm  
 E = 25 mm

X, Y according to the cable dimensions

**Mechanical connector for straight connection (EPPA-047-X/Y-L)**

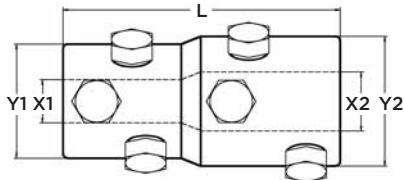


**Dimension:**

L = 130 mm    L = 180 mm

X, Y according to the cable dimensions

**Mechanical connector for size transition (EPPA-047-X1/Y1-X2/Y2-L)**

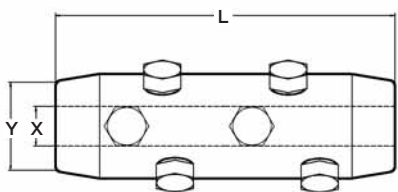


**Dimension:**

L = 130 mm    L = 180 mm

X1/Y1, X2/Y2 according to the cable dimensions

**Mechanical connector for cables with small insulation thickness (EPPA-063-X1/Y1-X2/Y2-L)**

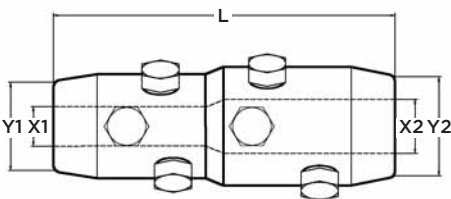


**Dimension:**

L = 180 mm

L = 230 mm

X1/Y1, X2/Y2 according to the cable dimensions



All of the above information, including drawings, illustrations and graphic designs, reflects our present understanding and is to the best of our knowledge and belief correct and reliable. Users, however, should independently evaluate the suitability of each product for the desired application. Under no circumstances does this constitute an assurance of any particular quality or performance. Such an assurance is only provided in the context of our product specifications or explicit contractual arrangements. Our liability for these products is set forth in our standard terms and conditions of sale. Raychem, TE Logo and Tyco Electronics are trademarks.

The Energy Division, a global operating unit of Tyco Electronics develops manufactures and markets products and systems for the electrical power industry. Today, the Energy Division employs approximately 4.000 people and annual sales amount to almost \$800 million. Our products are extensively employed by power utilites and equipment manufacturers, in rail transport systems and in industry around the world.

Tyco Electronics Raychem GmbH  
Energy Division  
Finsinger Feld 1  
85521 Ottobrunn/Munich, Germany

Phone: +49-89-6089-0  
Fax: +49-89-6096345

<http://energy.tycoelectronics.com>

 **Tyco Electronics**  
Our commitment. Your advantage.